

MONTHLY MEMBERSHIP PROGRESS REPORT

District 322 F

Results as of: 5/31/2026

GMT:

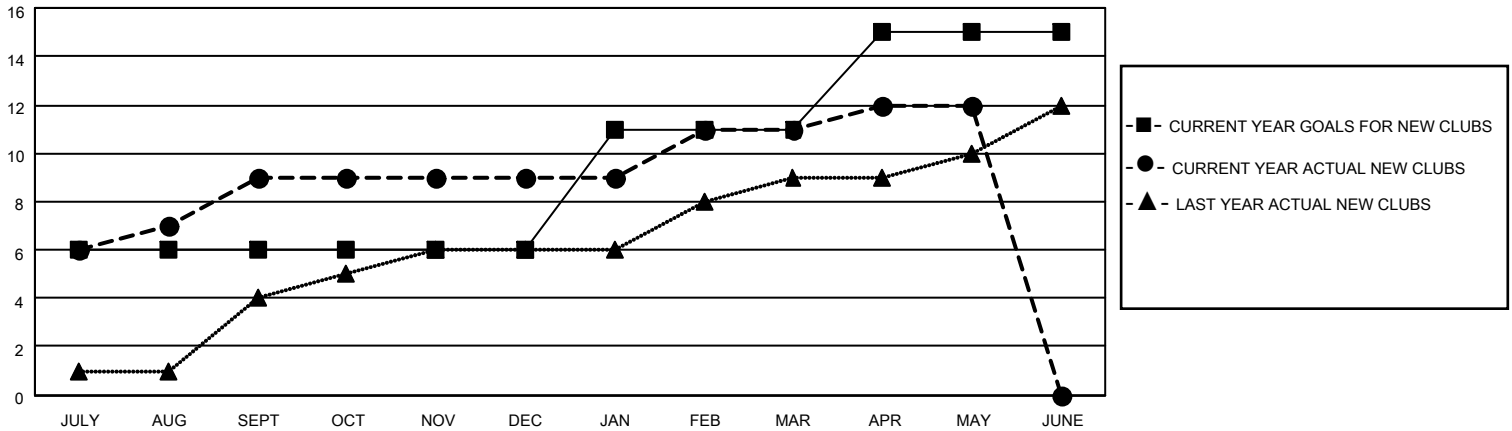
LOCATION INDIA

GMT CA

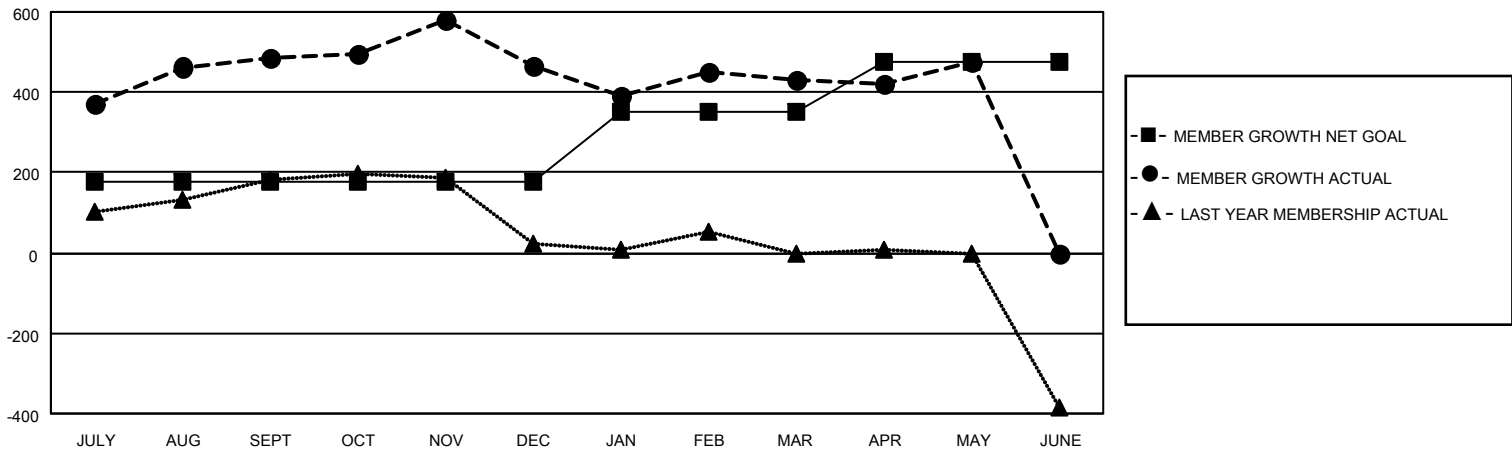
| Clubs | | | |
|-----------------------|---------------|-----------|---------------|
| RESULTS FOR 2025-2026 | | | |
| QUARTER | NEW CLUB GOAL | NEW CLUBS | DROPPED CLUBS |
| JULY/AUG/SEPT | 6 | 9 | 7 |
| OCT/NOV/DEC | 0 | 0 | 5 |
| JAN/FEB/MAR | 5 | 2 | 5 |
| APR/MAY/JUNE | 4 | 1 | 0 |

| Members | | | |
|-----------------------|------------------------|----------------------|--|
| RESULTS FOR 2025-2026 | | | |
| QUARTER | MEMBER GROWTH NET GOAL | MEMBER GROWTH ACTUAL | DROPPED MEMBERS ACTUAL (including transfers) |
| JULY/AUG/SEPT | 175 | 617 | 104 |
| OCT/NOV/DEC | 0 | 247 | 251 |
| JAN/FEB/MAR | 175 | 102 | 130 |
| APR/MAY/JUNE | 125 | 204 | 129 |

GOALS AND ACTUAL NEW CLUBS CUMULATIVE



GOALS AND ACTUAL MEMBERS CUMULATIVE



| | | |
|---|---|--|
| DROPPED CLUBS: 17 DROPPED MEMBERS DECEASED 7 CLUB CANCELLED 130 OTHER 474 TOTAL 611 | 95 CLUBS OF 119 ADDED 1 OR MORE NEW MEMBERS | GENDER DISTRIBUTION MALE 2,600 (64.63%) FEMALE 1,423 (35.37%) |
| | CLICK HERE FOR CUMULATIVE MEMBERSHIP DATA | TOTAL FAMILY UNIT MEMBERS 1,656 FAMILY MEMBERS PAYING HALF DUES 989 |